



Technical consulting and marketing services

**GERMAN CONNEX CONSULT Sarl.**



Engineering  
**GERMAN CONNEX CONSULT**

50676 Cologne - Germany

Tel.: +49-221-9230620  
Fax: +49-221-9230621  
Mobil: +49-163-428 64 14  
E-Mail: [aa@gccinter.com](mailto:aa@gccinter.com)  
<http://www.gccinter.com>



Engineering  
**GERMAN CONNEX CONSULT**

2010 Manouba, Tunisie

**GCC-German Connex Consult** connects the experience in Technology with Marketing.

For decades of activity with commitment to provide satisfactory work in engineering services in the areas of Chemical, Petrochemical and Construction Industry for internationally known companies, such as:

- Bayer AG, Leverkusen, Dormagen, Germany
- INEOS GmbH, Köln-Vorringen, Germany
- Shell Deutschland Oil GmbH, Wesseling, Germany
- Basell Polyolefine GmbH, Wesseling, Germany
- Dynamit Nobell, Leverkusen, Germany
- KHD Humboldt Wedag GmbH, Köln, Germany
- Martinswerk, Bergheim, Germany

To expanding our activities, we see the Marketing Service in the industry sector, as one of the main tasks of our company.

We are specialized in marketing of machines and complete production lines of construction product.

For decades, GCC-German Connex Consult is working closely with partners and internationally known manufacturers in construction industry with high technological know-how and each is an expert in his field.

GCC-German Connex Consult is a leading distributor of machinery and production lines in the building materials industry. Our activities cover the region of Europe, Africa and the Middle East.

With the second seat of our company GCC-German Connex Consult Sarl in Tunisia, we are in direct contact with customers.

With our professional network that is established for years in Arab and African countries, we have the best chance to promote our high quality products in the best conditions.

**We offer machines and complete production lines in various sectors such as:**

- ✓ **Autoclaved aerated concrete plant - AAC-plant.**
- ✓ **Sand-lime brick plant.**
- ✓ **Block machines plant for solid and hollow blocks, pavers, and curbstones.**
- ✓ **Concrete Batching Plant.**
- ✓ **Nano panel plant (Prefabrication of the walls for social housing).**

- ✓ **Cement plant.**
  - ✓ **Mining, quarry and gypsum industry.**
  - ✓ **Handling and Storage technology.**
  - ✓ **Packaging technology.**
  - ✓ **Automation technology.**
- 

### **Concrete block plant**

**Block machine:** The fully automatic block making machine is suitable for producing single or multilayer concrete products with excellent quality products.

Products that can be made such as pavers, concrete blocks for building construction, curbs and products for the garden.

Product height varies between 40 and 350 mm maximum.

We offer the following capacities standards:

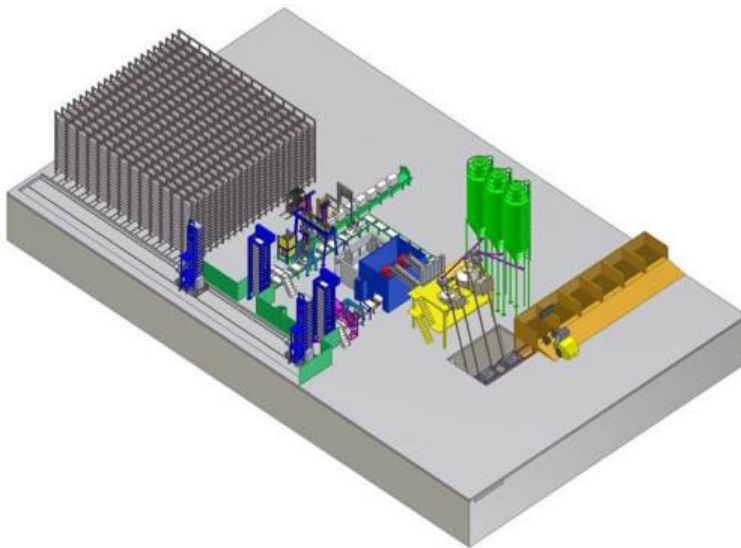
- **BM 10** fully automatic block machine.
- **BM 4** semiautomatic block machine.
- **MBM** mobile block machine.

### **Product range.**





**BM 10, Fully automatic block machine.**



**Items of equipment of BM 10:**

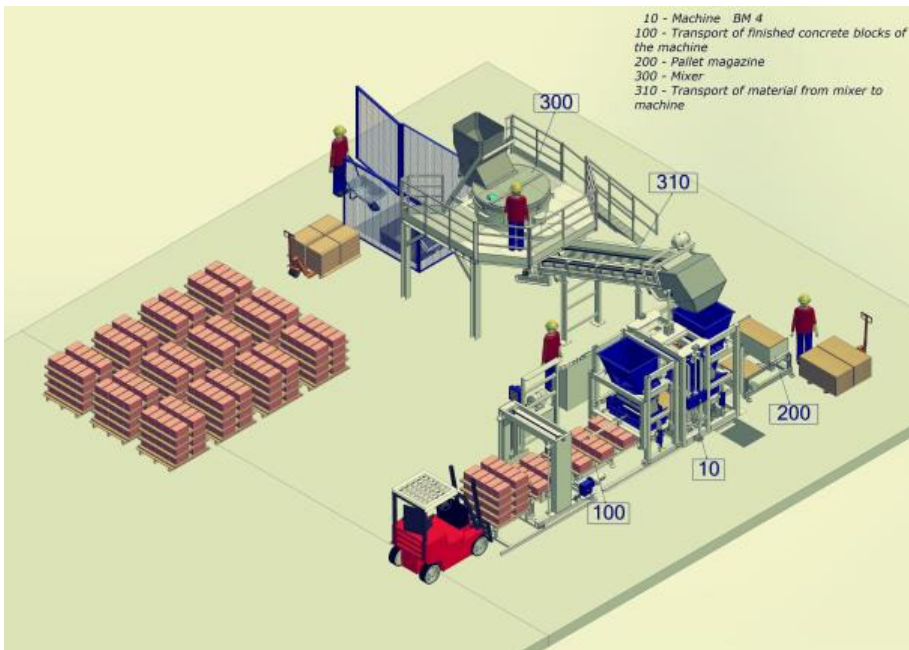
- Block machine BM10
- Pallet transport
- Oil sprayer
- Sound insulating cabinet
- Chain conveyor
- Product cleaning brush
- Tilting device
- Washing station
- V-belt conveyor
- Stacker
- RAS automated transfer car
- Destacker
- Latch type conveyor
- Stone remover/ centering device
- Pallet cleaning brush
- Pallet turner
- Cross pallet conveyor
- Packaging device
- Slat conveyor
- Pallet magazine
- Horizontal strapping machine
- Vertical strapping machine
- Curing chamber



BM 4, Semi-automated block machine.

**Items of equipment of BM 4:**

- Block machine BM 4
- Pallet infeed
- Pallet conveyor
- Stacker
- Mixer
- Transport belt
- Destacker
- Conveyor
- Manipulator
- Empty pallet stacker



BM 4, Front View.

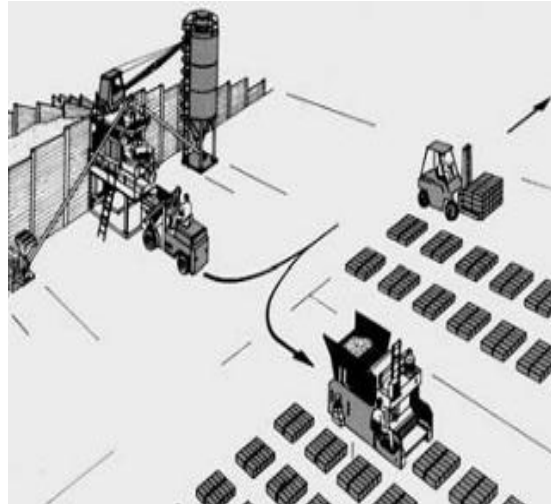
<b>BM 4, 10, Dimensions of the stones.</b>	
Blocs	400 x 200 x 200 mm
Paver	100 x 200 x 60 mm



Transfer car.



**MBM, Mobile block machines.**



**Blocks production scheme.**

**Mobile block machines;** easy to use and extremely robust.

--2 mould vibrators and 2 top load vibrators as standard equipment.

--Product height from 17.5 - 50 cm.

--Cycle time from 30 sec. for standard blocks.

--Complete plant can be supplied.

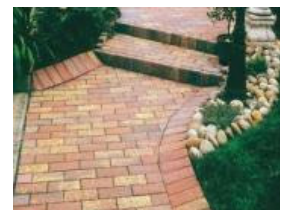
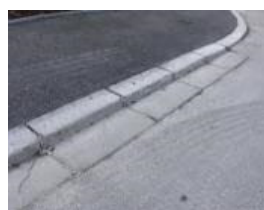
--The Fixed Handling RFH makes your mobile egg layer a stationary Block machine 20% higher productivity.

**Products:**

- Hollow blocks.
- Solid blocks.
- Curbstones..
- Landscaping elements.
- Isolated blocks.

<b>MBM, Dimensions of the blocs.</b>
400 x 200 x 200 mm
400 x 150 x 200 mm
400 x 100 x 200 mm
400 x120 x 200 mm
400 x 250 x 200 mm

**Examples of Pavers, curbstones, etc.**





Examples of building with blockmachine.



We offer a blockmachine Plant with a turnkey service; from technical advice, supply, Construction Management until after service.

Upon request, we will be pleased to send you our best offers.

Our competence and reliability are your advantage. All from one hand - from consulting and project planning to final assembly, commissioning and furthermore:

- Short ways.
- Less interfaces.
- Execution time reduced to a minimum.
- Only one contact.
- Customized automation and Engineering solutions.
- Integration of existing systems in new concepts.
- High system availability through robust construction.
- Easy maintenance, reliable customer service.
- Short-term available of original spare parts.

We will be pleased to receive your inquiries.

---